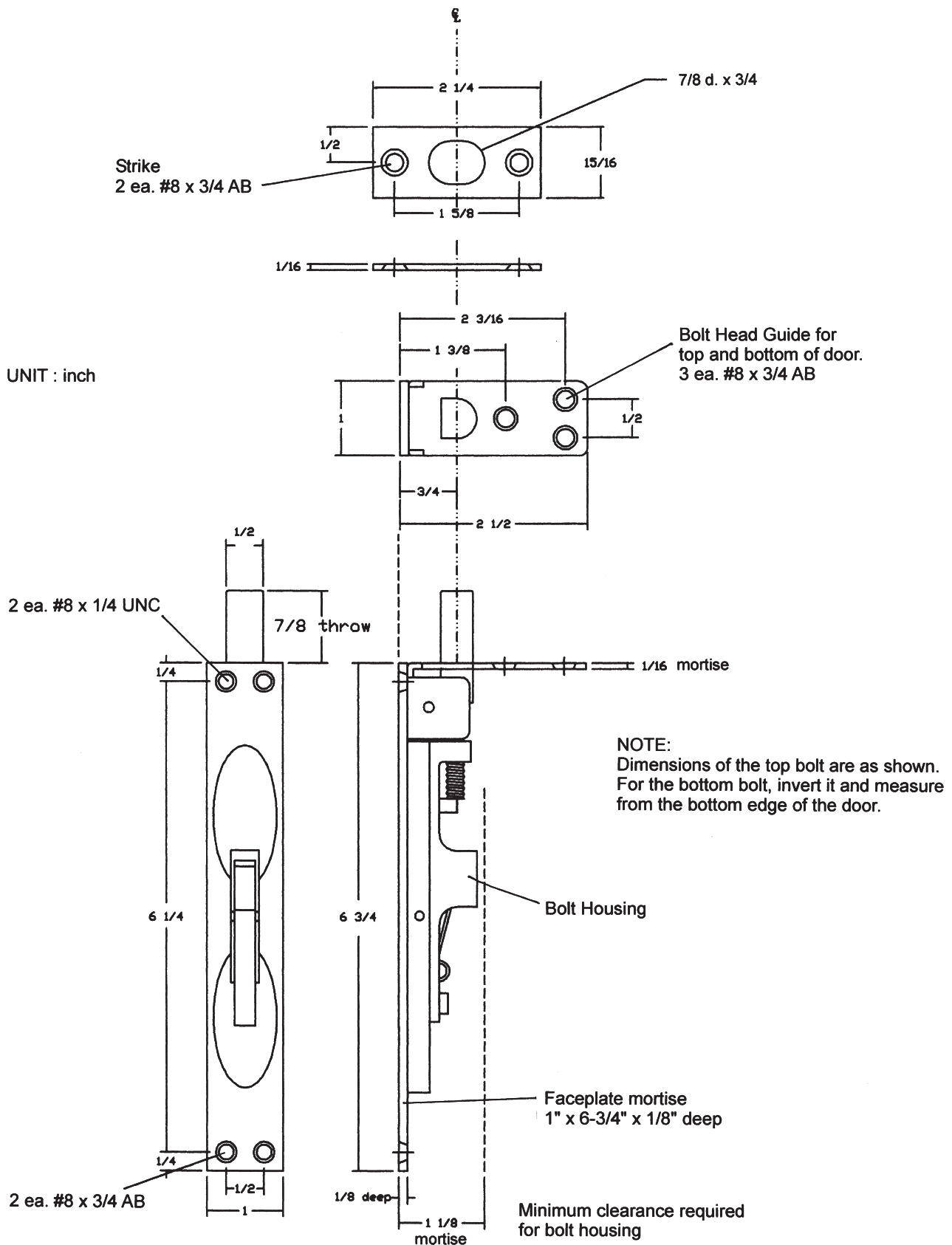


MANUAL FLUSH BOLT INSTALLATION TEMPLATE, No. FB100W (FOR WOOD DOORS USE)



REV : 01, 12/2010

SCREW DETAILS : #8-32 x 1/4" UNC – Flat Countersunk Head Machine Screw, total 2 pieces.

#8-32 x 3/4 AB – Undercut Flat Countersunk Head Machine/Tapping Combination Screw, total 7 pieces.